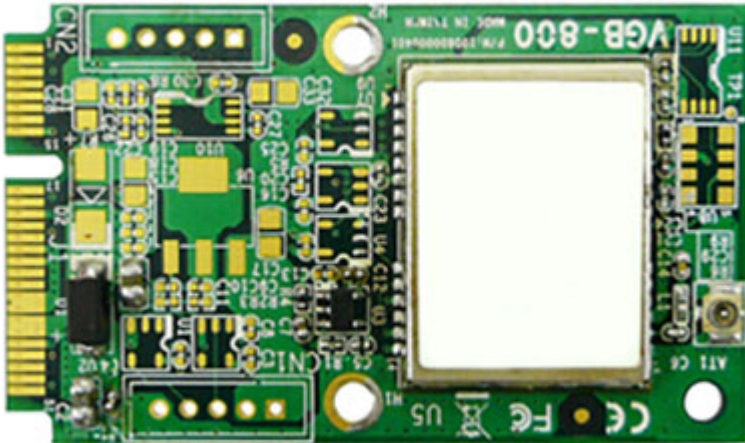


69.95 EUR  
incl. 19% VAT, plus [shipping](#)



- GPS/QZSS, GLONASS, BeiDou !
- 72-channels !
- -167dBm SuperSense !
- 10 Hz Update Rate !

**Support:**  [Specifications](#) | [Drivers \(Windows\)](#)

Embedded u-blox M8 GPS Mini PCIe Card

**Features :**

- Concurrent Reception of GPS/QZSS, GLONASS, BeiDou
- 72-channel u-blox M8 Engine w/ Over 2 Million Effective Correlators
- 167dBm SuperSense® Acquisition & Tracking Sensitivity
- 10 Hz Position Update Rate
- Standard Mini PCIe V1.2 Full-Mini Card(USB2.0 Interface)
- Time To First Fix (TTFF) : <1 sec
- Operating Temp. : -40°C to 85°C

Specifications

	<b>Receiver Type</b>
Chipset	u-blox M8
Frequency	GPS L1 C/A, SBAS L1 C/A, QZSS L1 C/A, GLONASS L1OF, BeiDou B1
Channels	Supports 72 Channels
	<b>Sensitivity</b>
Tracking & Navigation	-167dBm
Acquisition	-160dBm
Cold Start (Autonomous)	-148dBm
	<b>Time to First Fix (TTFF)</b>
Cold Start	26 sec
Warm Start	26 sec
Hot Start	<1 sec
Aided Start	<2 sec
	<b>Accuracy</b>
Horizontal Position	Autonomous : <2.5m CEP, SBAS : <2.0m CEP
Accuracy of Timepulse Signal	RMS 30ns
Max Navigation	99% <60ns
Update Rate	10Hz (GPS & GLONASS), 18Hz (GPS)
	<b>Dynamic Conditions</b>
Velocity	<500 m/s (972 knots)
Acceleration	<= 4g

**Output Message Format**

GPS Protocol NMEA 0183 V4.0, UBX, RTCM2.3

**Multipath Suppression**

Type Intelligent multipath detection and suppression

**A-GPS**

Type Supports AssistNow® Online and Offline, OMA SUPL Compliant

**Environmental Characteristics**

Operating Temp. -40°C to +85°C

Storage Temp. -40°C to +85°C

Peak Supply Current Max=150mA

Max Performance Acquisition =74mA

Eco Mode Tracking = 43mA

Power Input 3.3V +-10% VDC input

Dimensions 51 x 30 (mm)

**Ordering Information**

Part Number VDB-810-000

Description Embedded u-blox M8 GPS Mini PCIe Card